



THE SUNROOF PLUS

• COMMERCIAL/RESIDENTIAL



The Eclipse SunRoof Plus is a retractable motorized shading system, with a long projection, providing 3-Season protection from the elements. This system is designed for windy areas and will provide protection from rain when properly installed with the light rain package.

The Sunroof Plus is available in two varieties; patio style is designed to attach to an existing structure and pergola style is engineered to be mounted on an existing structure. Both versions of this innovative shading system can be operated with a wireless wall switch or a handheld transmitter. When not in use, it can be safely retracted.

- ▼ Can be produced up to 19'8" wide x 13'0" projection
-or- 13'0" wide x 19'8" projection
- ▼ Wall mounted with support legs or fully supported on an existing structure
- ▼ Ideal for outdoor seating areas providing protection from sun and light rain
- ▼ Powder coated frame finish in White, Camel and Brown
- ▼ Retractable Fabric Cover: **sunbrella** 100% acrylic fabric or flame retardant fabrics as required
- ▼ Motorized, push button operation by **somfy**.
- ▼ Official Class II wind resistance
- ▼ Can cantilever up to 3' past front mounting point

PRODUCT DETAILS AND TECHNICAL SPECS

WARRANTY INFORMATION

Frame: 10 Years*

Fabric: 10 Years*

Motor/Electronics: 5 Years*

*To the original purchaser

AVAILABLE:



AVAILABLE:

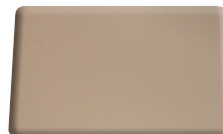


Includes lifetime on fabric & motor*

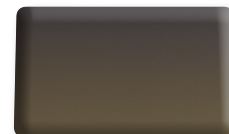
HARDWARE COLOR OPTIONS



WHITE
RAL 9016



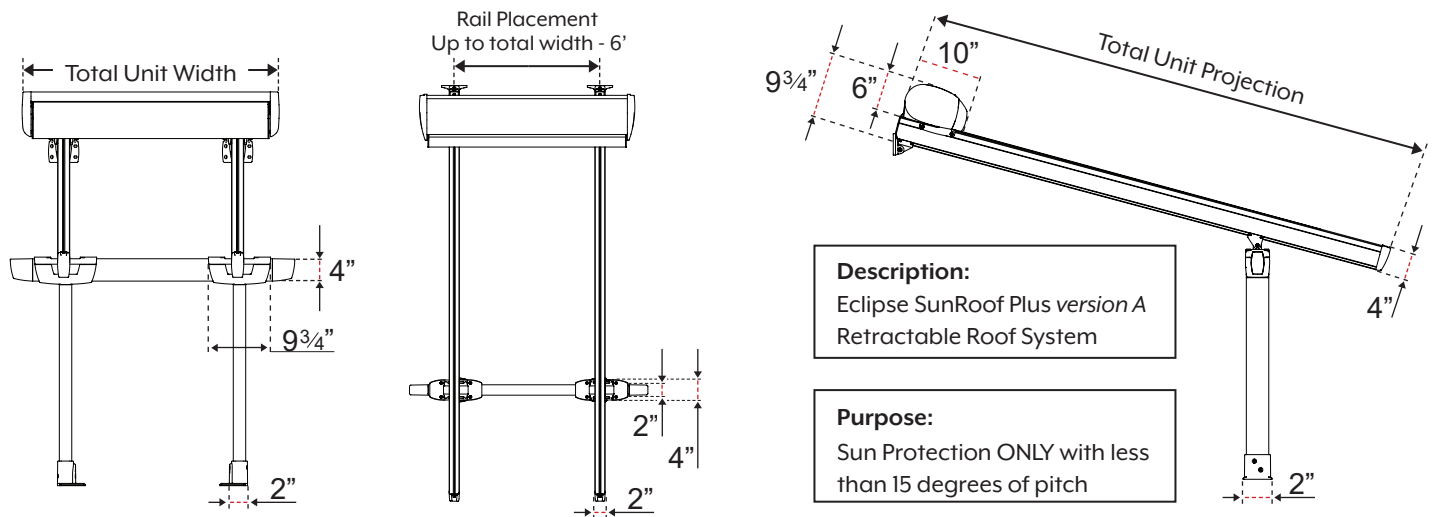
CAMEL
RAL 1019



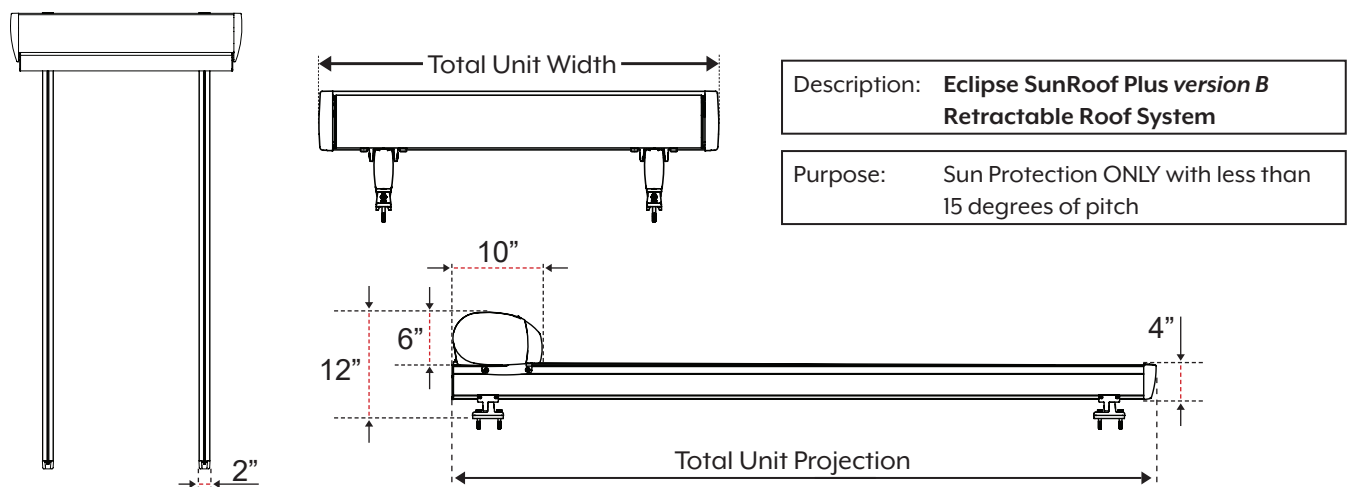
BROWN
Eclipse Unique Color

UNIT PROFILE VIEWS

VERSION A



VERSION B



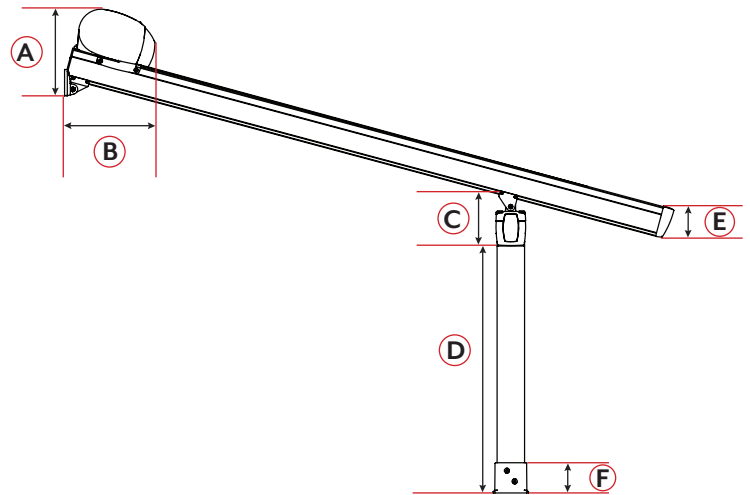
REQUIREMENTS FOR USE IN RAIN Or Voids Warranty

Minimum pitch requirements PLUS
Must also have fabric
mesh front section

9'0" projection:	21" OF PITCH
13'0" projection:	32" OF PITCH
16'6" projection:	38" OF PITCH
19'8" projection:	46" OF PITCH

VERSION 'A' MEASUREMENTS

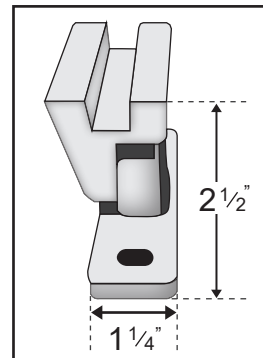
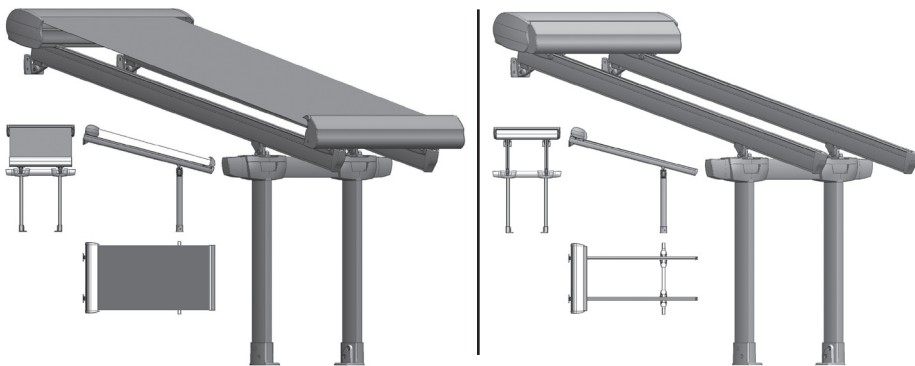
- A:** 11" from the Top of the Cassette box to the bottom of the Installation Bracket
- B:** 11" from the mounting surface to the leading edge of the Front Bar (when fully retracted)
- C:** 10" from the Top of the Support Post to the Bottom of the Guide Rail
- D:** 7'6" Height of the standard length Support Post
- E:** 4" Height of the Guide Rail
- F:** 4" post Mounting Base (included in the overall Support Post height)



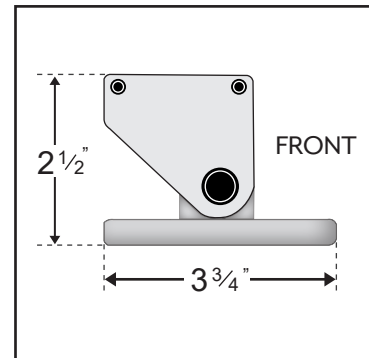
▶ **IDEAL PITCH:** (Bottom of "A" to the bottom of "E") A 3 on 12 pitch (15 degree).
So for every foot of projection you should have 3" of drop.

WALL & FLAT MOUNT BRACKET DETAILS

▶ Version A | Wall Mounted - Mounts to existing wall and uses the provided post

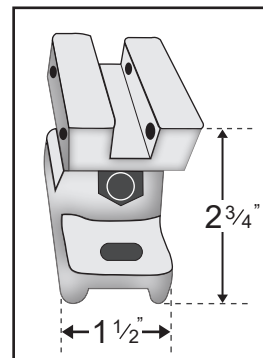


Bracket - Front View

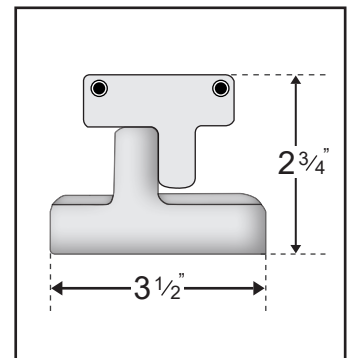


Bracket - Side View

▶ Version B | Flat Mounted - Mounts on top of existing structure



Bracket - Front View



Bracket - Side View

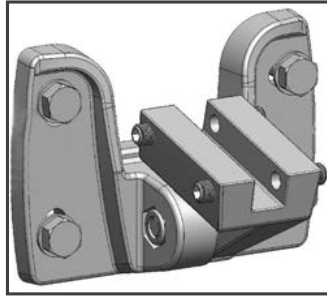
↓ WALL BRACKET & POST BASE DETAILS ↓

Eclipse SunRoof Plus Wall Bracket

Used on wall mounted:
SunRoof Plus ONLY

Available in:
White, Camel, and Brown

Holes = $\frac{3}{8}$ " x $\frac{1}{2}$ "

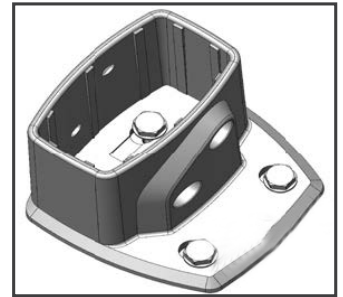


Eclipse SunRoof Plus Post Mounting Base

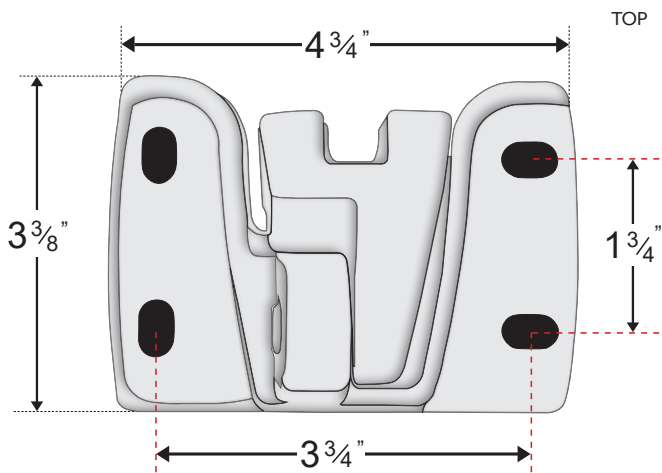
Used on wall mounted:
SunRoof Plus ONLY

Available in:
White, Camel, and Brown

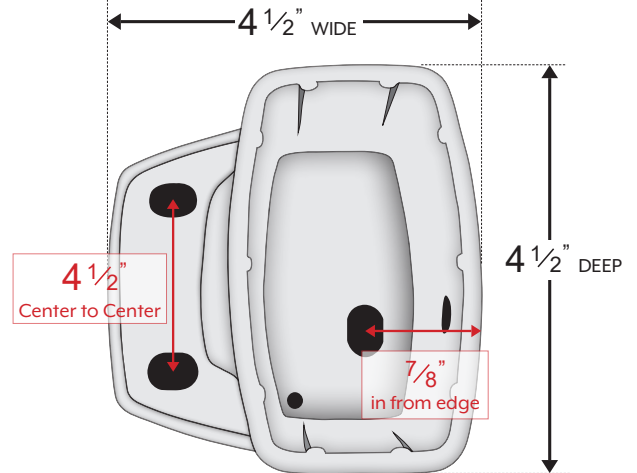
Holes = $\frac{5}{8}$ " x $\frac{1}{2}$ "



SUNROOF PLUS Wall Bracket - Front View



SUNROOF PLUS Post Mounting Base - Top View



► **Suggested Hardware:** 1/4" lag screws with washers - length determined based on installation surface. Fastening into sheathing or better.

↓ SPECIAL FEATURES ↓

► Version A

Mounts to existing wall and uses the provided post



► Version B

Mounts on top of existing structure

*Shown with wall mount brackets

